



MSU RETIREES ASSOCIATION

SPARTAN SENIOR NEWSLETTER

October 2018

VOL. 40, NO. 2

Stay in Old Quebec; walk to everything you need

Editor's note: We're starting a new series called "Travel Vignette," written by MSU retirees. If you would like to write one, let us know. Thanks to Al Leblanc for starting us off.

My wife and I recently went on a five day organized tour of Quebec City. We stayed in Old Quebec, inside the walled part of the city, and we were able to walk to everything a tourist might need. The tour company rented a bus only twice during the week – once to show us a wider swath of the city, and once to take us to the art museum. We were there during the great Quebec province heat wave of July 2018, but a cold front came through before the end of our stay and daytime temperatures were then in the 70s.

TRAVEL VIGNETTE

If you choose your own hotel in the old city, pay close attention to the details. Some of the hotels have very small rooms and no elevators. There is considerable variation in price. Our hotel was built in the 1830s, but has had heavy remodeling and renovation. It had elevators, but there were still 20 stair steps from entry to the front desk, and six steps between the two buildings. There were no elevators to get around these steps, but a bellman was always available if help was needed. The elevators did get you from floor to floor within

Please see TRAVEL VIGNETTE on page 7



SPARTAN SPOTLIGHT

Our Spartan Spotlight writer, Carla Freed, features Darcy Drew Greene in this issue of the newsletter. Greene retired from the School of Journalism in 2017. Read more about her photographic endeavors in Benin on pages 5 and 6.

Here are Greene's words about this photo: On the day the picture was taken, Ms. Legonou had just completed her work at a polling station in a town near Abomey. The three days she spent there were exhausting. She served as a monitor for Benin's presidential election that concluded on March 20, 2016.

MSU Charitable Campaign changes name to MSU Shares

MSU Shares is the new name of the MSU Community Charitable Campaign! In conjunction with the Capital Area United Way, MSU Shares works to make life better for those who are experiencing significant life challenges in the mid-Michigan area.

Not only is MSU Shares a whole lot easier to remember, it says exactly what our campaign is all about: MSU faculty, staff and retirees sharing some of what they have with those who are less fortunate.

For instance, did you know one of every three working families in our

area struggles to meet their monthly budget of housing, food, clothing, childcare, transportation and health-care. One in three!

These families are just one small emergency, such as a flat tire or ill child, from dire financial crisis. This is in spite of holding down jobs and making daily decisions about their family's budget. Unfortunately, the cost of living continues to rise, and most struggling families cannot save enough for emergencies.

Please see MSU SHARES on page 3

Women's golf coach to speak at Nov. meeting

In 20 seasons at the helm of the Michigan State women's golf team, Stacy



Stacy Slobodnik-Stoll

Slobodnik-Stoll has established the program as a consistent regional and national power. At our November meeting, Coach Slobodnik-Stoll will discuss how she consistently guides a winning women's golf team that succeeds academically as well as athletically.

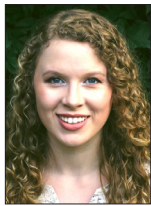
When Monday, Nov. 12, 2018

Time 2 p.m., refreshments at 1:30 p.m.

Where Community Room, MSUFCU Branch, Mt. Hope & Farm Lane, East Lansing

Dec. meeting will feature musical treat

At the December membership meeting, we'll get a chance to listen to music from two MSU music students. Charlotte Darr is a classical soprano



Charlotte Darr

from Dexter, Michigan. She is pursuing her B.A. degree in music education and vocal performance. She loves to sing a variety of styles ranging from classical and contemporary to musical theatre.



Lisa Summers

Lisa Summers Michigan native, regularly performs in collaborative and chamber recitals and works as a piano instructor at music

studios in Holt and Grand Ledge. She is currently a D.M.A. candidate for the degree in piano performance and an M.M. degree in piano pedagogy.

When Monday, Dec. 10, 2018

Time 2 p.m., refreshments at 1:30 p.m.

Where Community Room, MSUFCU Branch, Mt. Hope & Farm Lane, East Lansing



PRESIDENT'S MESSAGE

Rick Vogt

We will be surveying retirees soon to help us understand how we are doing and help plan for the future. I ask you to take a few minutes and take the survey and share your perspective and ideas.

The following is the MSU Retirees Association mission statement. Many people ask what we do and why do we do it.

To establish and maintain a community of fellowship among its members to stimulate individual and mutual interests and concerns; to bring its members together for social, recreational and educational purposes; to communicate and clarify information that has special impact upon retired persons and surviving spouses; to provide liaison between Michigan State University retirees and Michigan State University administration; and to participate in service projects and programs that benefit its members, Michigan State University and the community.

What services are offered to accomplish this? We offer information, events and special interest groups to enrich retirement. We provide information of interest to retirees such as benefits, travel and opportunities. We sponsor events for social, health & safety and educational purposes. We offer special interest groups, so you can share time and experiences with others who enjoy the same things you do.

We work to help maintain a good relationship between the retirees and the university. As individuals, MSU retirees, their spouses and partners are believers in MSU's mission. Retirees continue to help MSU shape a better future. Retirees have a long history of volunteering; contributing financially millions of dollars annually; supporting athletics, the arts, theater, music, museums and other programs; and being legislative advocates for higher education. We are retired, but we still care about MSU. MSU cares about us as well and appreciates all we do. The leadership of the MSU Retirees Association understands this relationship and works to keep it strong and mutually beneficial.

The MSU Retirees' Association is an all-volunteer organization. There are no membership fees. We work to fulfill this mission with resources available. If you can help, please call us, 517-353-7896.

MSU Retirees Association to survey members



In the near future you will receive an email from us requesting you to take part in an online survey, which will help us assess how we serve you today and how we can better serve you in the future. Please take a few minutes and complete this survey. Thank you.

MSU SHARES, continued from p. 1

This is why we encourage you to support the work of hundreds of local organizations by investing in the MSU Shares Campaign. We know that our individual contributions have a much greater positive impact when they unite with those of thousands of other “Team MSU” faculty, staff and retirees.

Of course, sharing with others is also a tangible way for each of us to live out MSU’s land grant mission.

Last year, MSU retirees donated more than \$64,000 to the campaign, more than 22% of all MSU pledges and donations.

As an MSU retiree or surviving spouse, you will soon receive a letter from the MSU Retiree Campaign chairperson and the MSU Shares



MSU Shares co-chairs Craig Gunn and Jeff Brodie

co-chairs asking you to contribute, continue to do so, or even consider increasing your generosity by giving to local charitable organizations.

Thank you for your past support! This year – won’t you please – care enough to share.

New MSU parking permit option available for retirees

Good news. You can now register both of your cars and use the reposition-able parking permit on one or the other. This replaces the traditional parking permit which is valid for one car. These reposition-able permits are available in the MSU Parking Office. To get this permit, remove your permanent parking permit and take the remains to the MSU Parking Office along with license registrations for both cars. There is no cost to exchange for a reposition-able parking permit. Questions. Contact MSU Parking Office at 517-355-2221.

Eli and Edythe Broad Art Museum

Michigan State University

broadmuseum.msu.edu

ALWAYS FREE!

517 884 4800

We offer public tours at the museum on Saturdays and Sundays at 1pm and 3pm led by trained docent educators. With frequently rotating exhibitions, there is always something new to experience. Visit our website for a complete listing of upcoming exhibitions and events.

PLAN YOUR VISIT:

MSU Broad

547 E Circle Dr., East Lansing MI
Tuesday–Sunday, 12–7pm

Art Lab

565 E Grand River Ave., East Lansing MI
Tuesday–Sunday, 12–4pm



MSU BROAD

TOURS ON CAMPUS



Campus tree tour scheduled for Oct. 24

Frank Telewski, professor of plant biology and curator of the W.J. Beal Botanical Garden and Campus Arboretum at MSU, will lead a tree tour for MSU retirees on Oct. 24. His research focuses on tree growth and response to environmental stress.

What Tour, "Every Spartan Tree Has a Story" Walk & Talk
When Wednesday, Oct. 24, 2018
Time 1 p.m.
Where Beaumont Tower



Kirk Domer kicked off the MSURA membership meetings for the year on Sept. 10.

What Tour, MSU Theatre Department's Scene Shop
When Wednesday, Jan. 30, 2019
Time 2 p.m.
Where Farm Lane and Mt Hope Roads, behind the MSUFCU branch. We will meet at MSUFCU branch's Community Room before the tour.

Visit the MSU theatre's Scene Shop

Kirk Domer, MSU Theater Department chairperson, and his colleagues, Mark Willoughby and Levi Galloway, have invited MSU retirees to tour the MSU Theater Department's Scene Shop. The event will be held on Jan. 30 at 2 p.m. Details are to the left. Scenes from "Oklahoma!" will be under development at the time of the tour. This will be a great time to see the scenes at full scale and hear about the process to create them. Check out this year's plays at <http://theatre.msu.edu>.

Retirement is Work! By Tom and Kevin Cocozzoli



Interested in radio?

Friends of the MSU Amateur Radio Club (FOMARC@groups.io) is a new Special Interest Group dedicated to supporting the Michigan State University Amateur Radio Club.



If you like radio, please join us. We are alumni and friends who are amateur radio enthusiasts and fans of the student run organization at Michigan State dedicated to our "essential avocation." We also provide resources for anyone interested in obtaining a license and joining the hobby. For more information, contact Ed Ozer, W8EO at oxer@msu.edu.

ON THE JOB



Leopold Sakiti is a veterinarian and worked for the government for 25 years. Now he has his own private practice and is shown here sitting at the entrance to his clinic. Although household pets are rare in Abomey, the cat earns its keep and care by deterring rodents.

Greene uses portrait photography to share stories of Africans

Like many grandmothers, Darcy Drew Greene is a storyteller. But she has spent her career taking storytelling to a whole new level and for audiences well beyond those who call her Grandma.

Greene, who retired as associate professor emerita of journalism in 2017, is a graphic designer and documentary photographer with a passion for multimedia storytelling and the myriad ways information can be shared over the web and mobile devices.

She joined the MSU faculty in 1984 to teach photojournalism and during her tenure worked to expand the visual



Darcy Drew Greene

journalism curriculum to include print publication design and online web publishing, as well as print and interactive graphics.

It was an era, she says, in which the field of visual design went digital, and one

of her contributions was to co-write the grant proposal for the College of Communication Arts and Sciences first Macintosh lab—outfitted with Mac SE computers featuring 9-inch display screens, she recalls with a laugh.

Personal stories were a key element in two websites Greene helped develop: Breast Cancer Lighthouse, to provide hope and resources to newly diagnosed women, and Completing a Life, to help those living with advanced illness take charge, find comfort, and reach closure.

Greene's creativity man-

Please see SPARTAN SPOTLIGHT on page 6

SPARTAN SPOTLIGHT



BY CARLA FREED



Hebiossonon Hundaxo Nagbo is a Hevioso priestess. Hevioso, the Vodun god of lightning, thunder and strength, resides in the Kapok tree shown here. Ms. Nagbo's grandmother had been a Hevioso priestess as well.



Didier Akuedenoudje is a motorcycle-taxi driver. He started a mechanic business in a larger city north of Abomey, but he had to close his shop and move back to Abomey to support his mother after his father died.

SPARTAN SPOTLIGHT, cont. from p. 5

ifests itself behind a camera as well. Case in point: an exhibit showcasing her photography, *On the Job in Abomey: Portraits of Working People in Benin*, which runs through April 30, 2019, in the MSU Museum Heritage Gallery.

The exhibit, which opened in August, is the fruit of Greene's month-long visit to the West African nation of Benin in 2016, and features not only photos of workers ranging from artisans to business owners, but also relevant artifacts and written profiles for which she enthusiastically credits her husband, Jim Greene.

While the exhibit was two years in the making, its roots go back nearly five decades to Greene's two-year stint in Benin with the Peace Corps following graduation from the University of Washington with a bachelor of arts degree in speech communication in 1969.

While teaching rural village girls life skills such as nutrition and child care

and helping them establish a bead jewelry business, Greene saw firsthand the poverty and the struggles many Beninese faced in supporting their families.

It was in Benin that she met the fellow Peace Corps volunteer who was to become her husband and then a fellow graduate student at MSU—he in telecommunication while she earned a master of fine arts in graphic design.

After settling in Grand Ledge, they raised three children: Moira, who lives in Lansing; Michael, who lives in Lake Tahoe; and Matthew, who now calls Los Angeles his home.

Then in 2011, she received a Humanities and Arts Research Program (HARP) grant to research the work of French photojournalist Pierre Verger. That research took her back to Benin in 2012 to photograph locations found in Verger's work and resulted in an exhibit contrasting their photographs at MSU in 2014.

Individuals Greene met during that second visit to Benin were the catalyst for

her current exhibit.

"I was reminded of what I had observed so many years earlier as a Peace Corps volunteer," she says. "Despite dealing with long hours, low pay, and job insecurity, these individuals were committed to working hard to make ends meet.

"Moreover, as they shared their thoughts, I came to the realization that their experiences—both the good and the bad—were not unlike those of workers everywhere. It was then I knew I wanted to tell their stories."

Although she took a break this year to prepare for the opening of the job exhibit, Greene plans to resume co-directing MSU's Study Abroad summer program entitled Photo Communication in the United Kingdom, Czech Republic, and France.

Other retirement plans include doing yoga, reading, cooking, improving her French and traveling west to Lake Tahoe and Los Angeles where she will, no doubt, captivate her three (make that four in November!) grandchildren with her storytelling.

“Despite dealing with long hours, low pay, and job insecurity, these individuals were committed to working hard to make ends meet.”

Check out the exhibit of Greene's work at the MSU Museum

On the Job in Abomey: Portraits of Working People in Benin, an exhibit featuring photographs by Darcy Drew Greene, will be on display in the MSU Museum Heritage Gallery through April 30, 2019.

Greene will present an Our Daily Work/Our Daily Lives brown bag talk related to the exhibit from 12:15 to 1:30 p.m. November 5 in the MSU Museum Auditorium.

each building.

Coffee shops, fast food, bars, souvenir shops, candy stores, drug stores, clothing stores, restaurants, and almost anything else you might need were within easy walking distance. There were also churches, museums and many historic sites. From the high points of the old city you have a nice view of the St. Lawrence River. Quebec City is very much oriented to the tourist trade, and although the official language is French, most of the people in the tourist industry also speak English.

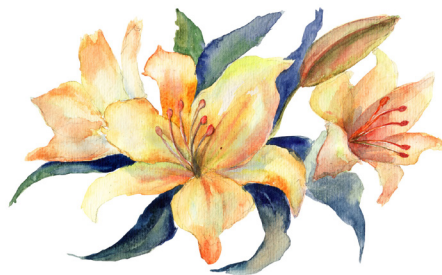
The old city is built on hills, so your walking will have a certain athletic character. Those who enjoy walking will find that there are very nice things to visit that are outside of the fortification walls, but not really too far away. We took some walks outside the old city walls, and never felt that we needed a cab to get back. One very handy feature is the funicular that connects the old city atop the bluffs with the newer shopping development at the foot of the bluffs. For about the cost of a bus ride, you can get out of a lot of steps that would be needed to accomplish the same elevation change.

The food was good, we felt totally safe at all times, and we believe that we could return to Old Quebec on our own without need for a guide or being signed up for an organized tour.

—Al LeBlanc

Donate docs to MSU Archives & Historical Collections

The Michigan State University Archives & Historical Collections collects and preserves materials that document the university's history, including records created by MSU faculty and staff. A few months ago the staff put together "Guidelines for Retiring Faculty and Staff on Donating Materials to the MSU Archives." If you would like to donate, contact University Archives and Collections at 517-355-2330.



IN MEMORIAM

The Spartan Senior Newsletter is now printing the names of MSU employees who have died in each issue of the newsletter. In publishing this notice to mark their passing, we honor them for their contributions to improve MSU and the Greater Lansing community.

Richard L. Anderson	7/21/18
Byron L. Autrey	7/20/18
Patricia Ward Ditri	6/30/18
Lawrence J. Fischer	8/7/18
Charles E. Garrison	5/30/18
Bradley Greenberg	7/26/18
John Paul Heffron	7/17/18
Emma Hepfer	8/21/18
John F. Holland	8/3/18
G. Wayne Hothem	7/19/18
Patricia Hott	7/6/18
Gordon S. Howell	8/13/18
Eleanor G. Huzar	5/7/18
Richard G. Johnson	7/2/18
William W. Joyce	6/25/18
Robert M. Lockhart	8/25/18
Elizabeth McClain	7/18/18
David G. McConnell	5/7/18
Beverly Meeder	7/11/18
Shirlee A. Murphy	7/2/18
Linda C. Oatley	7/31/18
Lawrence Sarbaugh	8/4/18
Georg Schuttler	8/10/18
Daniel Lee Scott	8/13/18
Irene Sherbo	7/28/18
Dona L. Smith	7/28/18
Al W. Stinson	8/13/18
Beverly Jean Terry	7/3/18
Sharon E. Vanatta	6/14/18
Marc VanWormer	8/15/18
Floyd Wagner	7/18/18
Wells E. Williams	8/1/18
Mary D. Zehner	9/25/17
Robert S. Zelmanski	11/18/17
John E. Zink	7/1/17

EARN MORE WITH AN MSUFCU IMMA

.65% APY

\$2,000 on deposit

You could earn more on your savings with an Insured Money Management Account (IMMA). An IMMA allows you to earn higher dividends on savings of \$2,000 or more.

Open your IMMA today!

www.msufcu.org
517-333-2424



Annual Percentage Yield (APY) effective 9/1/18. Minimum balance of \$2,000 in IMMA to start earning dividends. Federally insured by NCUA.



**Suite 22 Nisbet Bldg. MSU
1407 S. Harrison Road
East Lansing, MI 48823-5239**



**HAPPY
HALLOWEEN**

Lessons on Investing – Did you know?

StraightLine is a fiduciary that was chosen by MSU to provide professional advice and management to both employees and retirees at MSU. Our experienced advisors and dedicated research staff allows us to offer unbiased information to the MSU faithful. We present the following for your review:

Straight to the Point

Market Update - Domestic equity markets have continued to move higher until very recently, while international equities have been hit by a myriad of headwinds— US Dollar strength, large currency devaluations in Turkey and Argentina, contagion fears, and ongoing trade rhetoric. Domestic political issues are starting to take center stage, with ongoing division and leaks from within the administration which are creating a circus atmosphere, a brewing fight between those for and against the current nomination for the Supreme Court, and mid-term elections approaching. In all we see this as a time for caution, however, we continue to believe that a number of these issues will pass and investor focus will once again shift back to the economic and market fundamentals, which remain strong.

Investment Implications - While we can't solely invest based on historical trends, it is worth being aware of them. The second and third quarter of a mid-term election year are typically troublesome for markets and September is historically one of the worst months for the S&P, so seasonal factors are clearly working against investors right now. We expect market volatility to be somewhat elevated over the next two months, and wouldn't be surprised to see a small pullback in equities, particularly in US stocks where things look a bit more stretched. However, once we get past the elections, regardless of the outcome, we expect that we could see a global equity market rally, in what is typically a strong seasonal time for stocks. Exercise caution in the very near term, but don't lose sight of the big picture.

Our quarterly newsletter (StraightTalk) walks through the macro information that we are utilizing in respect to our near term strategy. Please contact us if you are interested in receiving these newsletters or discussing our macroeconomic views.

From StraightLine Higher Education Services



Headquarters
165 Kirts Blvd, Suite 100
Troy, MI 48084

East Lansing Office
2911 Eyde Pkwy, Suite 100
East Lansing, MI 48823

(877) EDU-403B
info@straightline.com
www.straightline.com



SPARTAN SENIOR NEWSLETTER MSU Retirees Association, Suite 22 Nisbet Building, MSU, 1407 Harrison Road, East Lansing, MI 48823-5239 • **Phone** 517-353-7896 • **Email** msura@msu.edu
Editor Rick Vogt 517-242-1324 • **Website** <http://retirees.msu.edu> • **Facebook** <https://www.facebook.com/MSURetirees> • **Change of address or MSU benefit questions**, contact MSU Human Resources at 800-353-4434