



# MSU RETIREES ASSOCIATION

## SPARTAN SENIOR NEWSLETTER

August - September 2019

VOL. 41, NO. 1



Detroit Athletic Club

### Visit 2 historic buildings, dine at Detroit Athletic Club on day trip

We are planning a one-day trip to Detroit on Tuesday, Oct. 15, and we think you'll love it. Sign up now to reserve your spot as those bus seats filled up fast on the day trip last spring.

Find all of the details (including the reservation form) on pages 6 and 7, but first, here are some basic details.

We'll leave Lake Lansing Meijer at 8:15 a.m. and return by 5:30 p.m. We'll visit two major architectural treasures in Detroit as well as have lunch at the luxurious Detroit Athletic Club, founded in 1887. Cost is \$99 for the day, which includes round-trip transportation on a comfortable motorcoach, the building tours and lunch.

### WELCOME, NEW RETIREES!

Are you a new retiree? Welcome to the MSU Retirees Association! We publish this newsletter seven times a year to keep you informed about membership meetings, campus issues surrounding retirees and more. Please get involved by coming to a membership meeting. They are normally held the second Monday of every month, September to April.

The MSU Retirees Association  
welcomes  
MSU's 21st President,  
**Dr. Samuel L. Stanley Jr., M.D.**  
We wish you much success.



#### UPCOMING MEMBERSHIP MEETINGS

### Athletic director to share sports info, challenges

MSU's Athletic Director, Bill Beekman, will speak to the MSU Retirees about MSU sports programs and the upcoming year's challenges. Beekman is responsible for oversight of MSU's 25 varsity sports teams as well as the care of more than 700 Spartan student-athletes.



Bill Beekman

Beekman officially assumed the role of MSU's 19th athletics director on July 17, 2018. He was appointed interim athletic director by MSU interim president John Engler on Feb. 5, 2018, before taking over the position full time.

**When** Monday, Sept. 9, 2019  
**Time** 2 p.m., refreshments at 1:30 p.m.  
**Where** Community Room, MSUFCU Branch, Mt. Hope & Farm Lane, East Lansing

### Directors collaborate, create successful local theatre

Williamston Theatre and the MSU Department of Theatre have a dynamic partnership that ensures collaborative projects between the two producing units on an annual basis. The purpose of this alliance is to continue the successful mingling of academic and professional theatre artists. Please join us to learn about this exciting collaboration and to hear about their 2019-2020 Seasons. Two local



Kirk Domer



Tony Caselli

Please see THEATRE on page 2

**When** Monday, Oct. 14, 2019  
**Time** 2 p.m., refreshments at 1:30 p.m.  
**Where** Community Room, MSUFCU Branch, Mt. Hope & Farm Lane, East Lansing

## OFFICERS AND BOARD FOR 2019-2020

President	Roger Baldwin	517-599-3395
Vice President	Rick Vogt	517-242-1324
Secretary	Jacqie Babcock	517-282-6861
Treasurer	Dave Brower	517-282-4883
Past President	Rick Vogt	517-242-1324
At-Large	Mike Gardner	517-290-7090
At-Large	William Anderson	517-290-7750
At-Large	Pam Marcis	517-485-3419
At-Large	Bruce Smith	517-323-9579
Office Mgr	Elizabeth Thomas	5517-351-7611
Asst. Office Mgr	Gayle Gower	517-332-0194

## STANDING COMMITTEE CHAIRS

Audit	Joe Lessard	517-676-9815
Awards	Angela Brown	517-336-0569
Budget	Dave Brower	517-282-4883
Communications	Rick Vogt	517-242-1324
Health Benefits	Marilyn Rothert	517-393-4364
Information Tech	John Forsyth	517-332-6683
Membership	Nancy Craig	517-351-1391
Program	Rick Vogt	517-242-1324

## SPARTAN SENIOR NEWSLETTER

Editor	Rick Vogt	517-242-1324
Designer	Cheryl Pell	517-214-4845
Underwriting Manager	Jacqie Babcock	517-282-6861
Mailing Labels Manager	John Forsyth	517-332-6683

## WEBSITE

Webmaster & Facebook Manager	Anders Johanson	517-974-8994
eNotices Manager	Rick Vogt	517-242-1324

## SPECIAL ASSIGNMENTS

Development Fund Coordinator	Dan Chegwiddden	517-884-1068
Photographer	Bruce Smith	517-323-9579
MSU Shares	Darlene Wenner	517- 339-1685



Please support our sponsors. They do a lot to help us defray the cost of printing and mailing this newsletter.



## PRESIDENT'S MESSAGE

Roger Baldwin

The new academic year is always a time of anticipation and renewal for people who structure their lives around the university calendar. This remains true for university retirees as well. Fortunately, MSURA members have a lot to look forward to in 2019-20. MSU Athletic Director Bill Beekman kicks off our first membership meeting on Sept. 9. Bill will speak about the new season for MSU sports teams. This is just the first of many membership meetings we will have with interesting speakers and performers.

Following on our successful MSURA bus trip to the Kellogg Manor House and the Gilmore Auto Museum last spring, we will have a bus tour to Detroit on Oct. 15. This trip includes visits to the historic Guardian and Fisher Buildings and lunch at the Detroit Athletic Club. I hope you will be able to join us for this interesting day.

We also like to visit interesting venues on the MSU campus. On Oct. 16 we have a "Relaxing with Music" program at Abrams Planetarium followed by a campus river walk color tour. More tours will be coming later in the year, including a visit to the FRIB (Facility for Rare Isotope Beams).

Our goal for the new year is to offer interesting programs and social opportunities to enrich the retirement years of our members and to enhance our relationship with MSU. We will also strive to actively engage more MSU retirees in our community. We encourage you to join us at many of our events over the coming year, and please bring along one or more MSU retiree friends.

## THEATRE, continued from p. 1

theatre powerhouses, Kirk Domer and Tony Caselli, will talk about this collaboration.

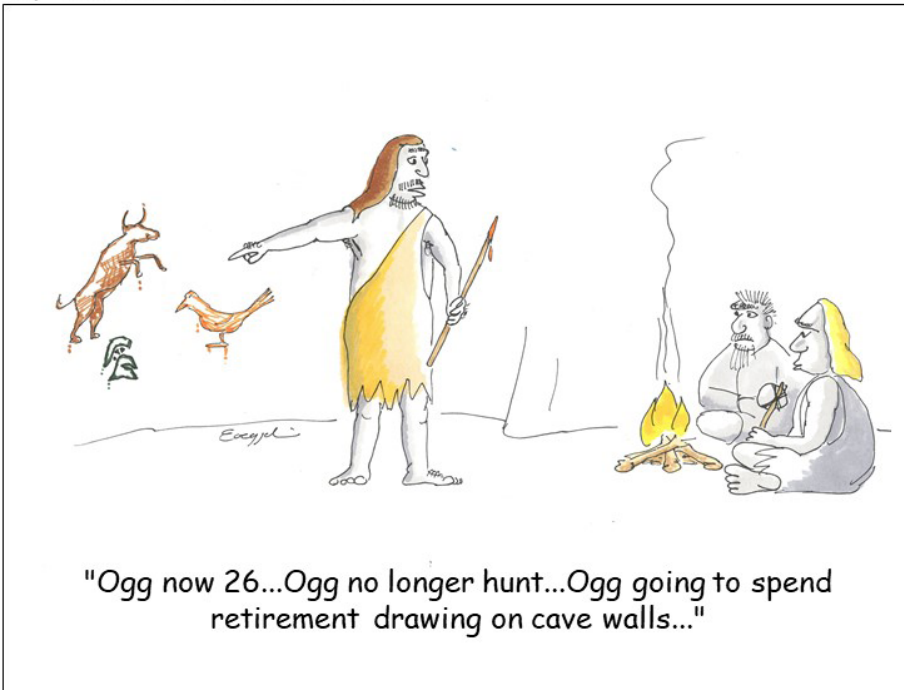
Domer is the chairperson and professor of scene design for the Department of Theatre at MSU. He has designed scenery and props for Williamston Theatre and numerous others. Domer received his MFA in Scene Design from the University of Wisconsin-Madison.

Caselli is artistic director and co-founder of the Williamston Theatre in Williamston, Michigan. A Michigan native, Caselli received his degree in theatre from Eastern Michigan University, and is a member of the Stage Directors and Choreographers Society, the union for professional stage directors.



**MSURA Board Members for 2019-2020** Front row left to right: Dan Mackey, MSU Human Resources liaison; Nancy Craig, Lugnuts event chair; Angela Brown, past president; Pam Marcis, at-large board member; Liz Thomas, office manager; Jacqueline Babcock, board secretary; Bruce Smith, at-large board member. Back row left to right: Ron Smith, past president; Dave Brower, treasurer; John Forsyth, IT support; Anders Johanson, webmaster; Roger Baldwin, president; William Anderson, at-large board member; Rick Vogt, vice president. Not pictured: Mike Gardner, at-large board member; Cheryl Pell, newsletter designer.

**Retirement is Work!**  
By Tom and Kevin Cocozzoli



**EARN  
MORE  
WITH A GREAT  
CERTIFICATE RATE**

**2.60%  
APY**

**5-Year Certificate**

With terms from three months to five years, there are many options to help you make your goals a reality.

Open your Certificate today!

[www.msufcu.org](http://www.msufcu.org)  
517-333-2424

**MSU** MICHIGAN STATE UNIVERSITY®  
FEDERAL CREDIT UNION  
Building Dreams *Together*



Federally insured by NCUA. Annual Percentage Yield (APY) effective 7/20/19. Early withdrawal penalty applies if funds are withdrawn prior to maturity. An early withdrawal could reduce your initial investment. Rate subject to change at any time. Dividend rates are subject to change weekly. Certificate rate is fixed for the term of the Certificate at the time the Certificate is opened. Additional deposits may not be made to Certificates, other than the 1-Year Add-On Certificate. A total of \$10,000 may be added to a member's 1-Year Add-On Certificate(s) each year. Visit [msufcu.org](http://msufcu.org) for full details.

# MARK YOUR CALENDARS



Please cut out this calendar and use it to help you keep track of MSURA activities!

**MSURA MONTHLY MEMBERSHIP MEETINGS** are at the MSU Federal Credit Union Community Room, Farm Lane & Mt. Hope Road, 1:30 p.m.–Refreshments, 2 p.m.–Program.

Please watch future newsletters and eNotices for more events.

DATE	SPEAKER	TOPIC	EVENT	LOCATION
Monday, Sept. 9 2019 1:30–3 p.m.	Bill Beekman, MSU Athletic Director	MSU Athletic Programs and the Upcoming Year's Challenges	MSU Retirees Association Membership Meeting	Community Room, MSUFUCU Branch, Mt. Hope & Farm Lane, East Lansing
Monday, Oct. 14, 2019 1:30–3 p.m.	Kirk Domer, Chairperson, MSU Department of Theatre, & Tony Caselli, Co-founder of Williamston Theatre	Williamston Theatre & MSU Theatre: A Dynamic Collaboration	MSU Retirees Association Membership Meeting	Community Room, MSUFUCU Branch, Mt. Hope & Farm Lane, East Lansing
Tuesday, Oct. 15, 2019 8 a.m.–5:30 p.m.	Various speakers at the buildings we will be visiting	Tour the Guardian Building, the Fisher Building & have lunch at the Detroit Athletic Club.	Architectural Building Tour to Detroit	See pages 6 & 7 in this newsletter
Wednesday, Oct. 16, 2019 Noon–2:30 p.m.	Relaxing Under the Stars & Campus Walk	Enjoy an afternoon of relaxing and walking on campus	MSURA Retirees Association Special Outing. See page 5 for more details.	Planetarium and Campus Riverwalk
Wednesday, Oct. 23, 2019 2–3:30 p.m.	Dan Mackey, MSU Human Resources Manager	Open Enrollment and Related Policy and Benefit Changes	Discussion will center around benefit changes.	Community Room, MSUFUCU Branch, Mt. Hope & Farm Lane, East Lansing
Monday, Nov. 11, 2019 1:30–3 p.m.	Dr. Karen Liby & Dr. Jamie Bernard, Department of Pharmacology & Toxicology	Positive Lung & Breast Cancer Research	MSU Retiree Association Membership Meeting	Community Room, MSUFUCU Branch, Mt. Hope & Farm Lane, East Lansing
Monday, Dec. 16, 2019 1:30–3 p.m.	Peter Boylan and pianist, MSU College of Music	Holiday Music, Variety of Classic Holiday Music from Around the World	MSU Retiree Association Membership Meeting	Community Room, MSUFUCU Branch, Mt. Hope & Farm Lane, East Lansing
Tuesday, Dec. 17, 2019 1–3 p.m.	Dr. Thomas Glassmacher, Lab and Project Director,	FRIB (Facility for Rare Isotope Beams) Tour	MSURA Retirees Association Special Outing	This event is limited to 50 people. Please watch for registration details in the next newsletter & eNotices.
Monday, Jan. 13, 2020 1:30–3 p.m.	David Thornton, Associate Director of Bands & Director of the Spartan Marching Band College of Music	Creating a Spartan Marching Band Performance	MSU Retiree Association Membership Meeting	Community Room, MSUFUCU Branch, Mt. Hope & Farm Lane, East Lansing
Monday, Feb. 10, 2020 1:30–3 p.m.	Dr. Mona Hanna Attisha, director of the MSU & Hurley Children's Hospital Pediatric Public Health Initiative	Keeping Water Safe to Drink & Update to Flint Water Crisis	MSU Retiree Association Membership Meeting	Community Room, MSUFUCU Branch, Mt. Hope & Farm Lane, East Lansing
Monday, March 9, 2020 1:30–3 p.m.	Dr. Charles Ballard, Professor, Department of Economics	Economic Impact Facing Retirees	MSU Retiree Association Membership Meeting	Community Room, MSUFUCU Branch, Mt. Hope & Farm Lane, East Lansing
Tuesday, March 24, 2020 1:30–3:30 p.m.	MSURA/StraightLine	Financial Planning Seminar	MSU Retiree Association Special Event	Community Room, MSUFUCU Branch, Mt. Hope & Farm Lane, East Lansing
Monday, April 13, 2020 1:30–3 p.m.	Dr. Rufus Isaacs, Professor, Department of Entomology	Michigan's Bees & What You Can Do to Support Them	MSU Retiree Association Membership Meeting	Community Room, MSUFUCU Branch, Mt. Hope & Farm Lane, East Lansing
Tuesday, May 5, 2020 11:30–2:30 p.m.	TBA	Luncheon: MSURA Elections & Business Meeting	MSU Retiree Association Annual Meeting	MSU University Club. Room announced at the front door



It's always a good time at a Lugnuts game. MSURA goes every summer. Join us next year!



## Planetarium and riverwalk campus excursion planned

MSU’s Healthy4U program, “Relaxing Under the Stars” at the MSU Planetarium is offered free throughout the year. It’s a great way to relax and rest while listening to music.

October is also a great time to walk the campus riverwalk along the Red Cedar and take in the colors and sounds of fall.

We will meet at the MSU Planetarium at noon on Wednesday, Oct. 16 for the “Relaxing Under the Stars” program and following it, we’ll meet outside the Planetarium and walk over to the riverwalk at 1 p.m. We’ll walk from Farm Lane east to

**Event:** Planetarium & Campus Walk

**When:** Wednesday, Oct. 16, 2019

**Time:** 12 p.m.–2:30

**Meeting Point:** Planetarium

Bogue, cross the river and back west to Kalamazoo, cross the river, and west to Farm Lane. It will be about a 50 minute walk.

There is parking near the Planetarium. If you have a Retiree’s Parking Permit, you have more parking options and can park for free. Contact MSU Parking office to acquire a Retiree’s Parking Permit.

## VOLUNTEERS NEEDED!

MSU Retirees Association is an all volunteer organization. We’re looking for some talented people, and we know you’re out there! We have four positions to fill:

- newsletter editor
- eNotice editor
- writers for the newsletter
- office volunteer

Consider getting involved in this dynamic organization. If you are interested, please call Rick Vogt at 517-242-1324. Thanks!

## In Memoriam



The Spartan Senior Newsletter is now printing in each issue of the newsletter the names of MSU retirees who have died. In publishing this notice to mark their passing, we honor them for their contributions to improve MSU and the Greater Lansing community.

Bruce T. Allen	3/5/19	John E. Kraeer	4/17/19
Howard P. Anderson	6/16/19	Lawrence Krupka	7/14/19
Pamela A. B. Bishop	3/4/19	Melvyn L. Lacy	4/18/19
Mary V. Blair	5/23/19	Donald Lusch	3/5/19
Nancy R. Bohnet	6/12/19	George T. Mansell	3/31/19
Ivonne Bragg	4/23/19	Harry A. Reed	5/11/19
Robert L. Brent	5/24/19	Gloria J. Richards	2/27/19
Doris Jean Brickman	6/15/19	Alvin L. Rippen	4/6/19
Dale Corwin Brown	6/28/19	Earle Robinson	5/11/19
Rimitia Brown	4/21/19	William Rosenthal	5/16/19
Daryl Burrows	7/2/19	C. Maureen Sander	5/4/19
Suzanne Byers	3/14/19	Mary Lu Sanderson	6/15/19
Frank W. Cambray	6/2/19	Carol Shaulis	4/3/19
Wilbur G. Campbell	4/26/19	Carl W. Sodman	5/14/19
Doris Cuthbertson	4/13/19	Barbara Stuart	6/12/1
Mary R. Davidson	5/27/19	Beatrice Terry	3/19/19
Monika Donley	6/13/19	Donald W. Twohy	5/3/19
Norbert B. Enzer	6/8/19	Jack Waterstradt	3/29/19
Richard Feters	6/1/19	Donald J. Weinshank	5/4/19
Stuart Gage	6/19/19	Robert Wilkinson	5/4/19
Emily Henderson	4/14/19	Dora L. Williams	5/7/19
Irineo Herrera	6/12/19	William R. Wiseman	3/20/19
Johnnie Hornbuckle	3/26/19	Karen Woehlert	3/2/19
Donald L. Irish	3/21/19	Anthony S. Wojcik	4/12/19
Michael Kalso	3/12/19	William Wynn	6/13/19
Robert Kever	3/16/19	Adam Zutaut	4/2/19
Janie Kitsmiller	6/24/19		

# Join us for Detroit Architectural tour, lunch at Detroit Athletic Club on Oct. 15

**DETROIT'S GUARDIAN BUILDING** became known as the city's Cathedral of Finance. Beginning in the building's grand banking lobby, you will learn the details surrounding the building's creation, including the banking titans, stone workers, artists and architects involved. The tour will include discussions in the banking area as well as the main entrance way. See firsthand the intricate design and exquisite detail of Rowland's artistic achievement, including works by muralist Erza Winter, tile installations by Pewabic's Mary Chase Stratton and sculpture by Corrado Parducci. The tour is capped with a trip to the grand ballroom on the building's 32nd floor. **NOTES:** Photography is allowed. Tour is handicap accessible.

**LUNCH** will be at the Detroit Athletic Club. Our tentative lunch menu is House Salad, Chef Choice of Starch and Vegetable, House Baked Rolls and Butter, 'Michigan Chicken' Stuffed Breast with Basil-Havarti, Poultry Glaze, Sherry Wine, and Mushrooms, served with your choice of regular and decaffeinated coffee, and hot tea selections.

**THE FISHER BUILDING** has been an iconic landmark in Detroit since its completion in 1928. While its significance in Detroit's history never waned, The Fisher's position in the city's growth and real estate market has. The Fisher Building has played a seminal role in Detroit's history. The Fisher was imagined as a building to honor the people of Detroit — an ode to the American work ethic and to American artisans. The Fisher Building tour offers exclusive access to the building known as Detroit's Largest Art Object. An expert will lead you through Albert Kahn's 1928 masterpiece where you will learn intimate details regarding the family, business, and architects involved in its creation. You will see firsthand the exquisite design and ornamentation of the interior arcade, including one-of-a-kind mosaics, painted ceilings, Art Deco chandeliers and the finest craftsmanship in stone, brass and bronze. **NOTE:** Tour is handicap accessible.

**IMPORTANT INFORMATION** Guests must follow the Detroit Athletic Club dress code, which is Professional Business Attire. This includes business suits, sports coats and ties for men or skirts, pant suits and dresses for women. No denim of any style or color, no capri pants or leggings. No bare shoulders, no open toe shoes or tennis shoes, no visible tattoos or piercings (except earrings), no Smoking, no gum chewing, no ringing cell phones and no vulgar language. **NOTE:** If you choose to pack a pair of dress shoes and change them out on the bus before and after lunch, you are welcome to do so!

## TRIP INCLUDES:

- Round trip transportation by Motorcoach
- Tour of the Detroit Guardian Building
- Lunch at the Detroit Athletic Club  
*Tentative Menu:* House Salad, Chef Choice of Starch and Vegetable, House Baked Rolls and Butter, 'Michigan Chicken' Stuffed Breast with Basil-Havarti, Poultry Glaze, Sherry Wine, and Mushrooms, served with your choice of regular and decaffeinated coffee.
- Tour of the Fisher Building

**COST:** \$99

Mail your check and reservation form (found on page 7) to:

**Midwest Tours, Attn: Sharon**

**1885 Wilderness Drive, DeWitt, MI 48820-7991**

Questions or concerns?

Contact Sharon at [mwtours@yahoo.com](mailto:mwtours@yahoo.com) or 517-668-0800

**DEADLINE FOR RESERVATION:** Aug. 31, 2019



The Guardian Building



The Fisher Building

## TENTATIVE SCHEDULE:

**Tuesday, Oct. 15, 2019**

**8:00 a.m.**

Motorcoach arrives Meijer on Lake Lansing Road (by Light Post K)

**8:15 a.m.**

Motorcoach departs Meijer on Lake Lansing Road  
Rest area stop

**10 a.m.**

Arrive Detroit Guardian Building

**11:30 a.m.**

Lunch at Detroit Athletic Club

**1:45 p.m.**

Arrive Fisher Building

**3:30 p.m.**

Motorcoach depart for return

**5:30 p.m.**

Return to Lake Lansing Meijer (dependent on traffic & weather)

Please fill out and return the following reservation form with your check to confirm your trip.

# MSU RETIREES ASSOCIATION TRIP

## MSURA Detroit Historic Building Tour — Tuesday, Oct. 15, 2019

Make check payable to **Midwest Tours**. Fill out this reservation form and return with check to

**Midwest Tours, 1885 Wilderness Drive, DeWitt, MI 48820-7991**

Contact Sharon at [mwtours@yahoo.com](mailto:mwtours@yahoo.com) or 517-668-0800

Name (As Appears on Driver's License) First \_\_\_\_\_ Last \_\_\_\_\_

Preferred Name \_\_\_\_\_ Date of Birth (month/day/year) \_\_\_\_\_

Address (As Appears on Driver's License) \_\_\_\_\_

City \_\_\_\_\_ State \_\_\_\_\_ (Long) ZIP Code \_\_\_\_\_

Telephone (Home) \_\_\_\_\_ (Cell) \_\_\_\_\_

Email Address \_\_\_\_\_ Special Needs \_\_\_\_\_

Medical condition we should be aware of \_\_\_\_\_

Traveling with (All in your group, please) \_\_\_\_\_

### Emergency contact person: (Not traveling with you)

Name \_\_\_\_\_ Relationship \_\_\_\_\_

Daytime Number \_\_\_\_\_ Evening Number \_\_\_\_\_

### Trip Cancellation Policy

If a trip is canceled 61 days or more in advance of departure date, customer will receive a full refund of any payments made.

If a trip is canceled 60 days to 33 days in advance of departure, a 10% charge is assessed.

If a trip is canceled 32 days or less in advance of the departure date, no refund will be assessed.

**I have read, understand and agree to the above.**

Signature \_\_\_\_\_ Date \_\_\_\_\_

Printed Name \_\_\_\_\_

### Waiver

Midwest Tours, MSU Retiree Association, and Sharon Hetrick shall not become liable for any personal injury, property damage, accident, delay, inconvenience, change in itinerary or other irregularity which may occur due to (1) wrongful, negligent or arbitrary acts or omissions on the part of the Suppliers, their employees or others not under the direct control of Midwest Tours, MSU Retiree Association, and Sharon Hetrick (2) defects or failures of any conveyance, equipment or instrumentality under the control of the Suppliers, and (3) but not limited to, Acts of God, fire, riots, strikes, thefts, pilferage, epidemics, quarantines or dangers incidents to the sea, land and air.

The Client agrees to hold Midwest Tours, MSU Retiree Association, and Sharon Hetrick blameless in making the arrangements on his/her behalf, provided same shall be made through generally acceptable suppliers at the time of engagement, and further agrees that restitution or damages, if any are claimed, shall be sought directly from the suppliers. The Client also agrees to the terms and conditions of the tour, or services as set forth in the brochures and/or circular of the Suppliers.

I have read, understand and agree to the above.

Signature \_\_\_\_\_ Date \_\_\_\_\_

Printed Name \_\_\_\_\_

### Disclaimer for cars being left at Meijer on Lake Lansing Road

If you are leaving your car, I need to have you fill out the following:

While parked at Meijer on Lake Lansing Road on Oct. 15, 2019, for the MSU Retirees Association/Midwest Tours Detroit Historic Building Tour, I understand Midwest Tours, MSU Retirees Association, and Sharon Hetrick, Jeff Hetrick and Meijer are not liable for my car and the contents therein.

Signature \_\_\_\_\_ Date \_\_\_\_\_

Printed Name \_\_\_\_\_

License Plate # \_\_\_\_\_ Make, Model, Color and Year of Car \_\_\_\_\_

**For Midwest Tours Use Only: (\$99) Check Number \_\_\_\_\_ Date Received \_\_\_\_\_ Amount \_\_\_\_\_**

## Military History Study Group observed the 75th Anniversary of Normandy Invasion with speaker

On Thursday, June 6, the 75th anniversary of the Normandy invasion in World War II, MSU Professor Emeritus Dr. David P. Lusch presented a program about the geographical considerations and limitations that General Eisenhower had to work with in the planning of D-Day. Professor Lusch is a student of military history, and has studied this battlefield in person. The meeting took place in the Community Room at the Farm Lane Branch of the MSU Federal Credit Union, sponsored by the MSU Retirees Association Military History Study Group. The audience, which was counted at 127 people, occupied all the chairs available in the room, with additional attendees standing in back. We were honored to have several veterans of World War II in attendance, and veterans were present who served in every American war since World War II. Professor Lusch is retired from the Department of Geography, Environment, and Spatial Sciences at Michigan State University after 38 years of service.

## MSU Pharmacies offer Tdap to vaccination portfolio; free to MSU retirees, spouses



Vaccinations free to MSU Retirees include Flu, Shingles (SHINGRIX) and Tdap.

MSU HealthTeam Clinical Center and Olin Health Center Pharmacies now provide the Tdap vaccine for adults 18 years and older. Tdap protects against tetanus, diphtheria and pertussis or whooping cough. CDC recommends one dose of Tdap for adults who have never received it. Adults can get the dose of Tdap before the 10-year mark.

Other vaccinations free to MSU Retirees include Flu and Shingles (SHINGRIX).

Talk to a pharmacist to learn what is best for your vaccination needs. You can visit the Clinical Center Pharmacy during the following business hours: Mondays through Fridays from 8 a.m. to 5 p.m. <https://www.pharmacy.msu.edu>

# Admission is always free.

Join us for docent-led public art tours on Saturdays and Sundays at 1pm and 3pm.



[broadmuseum.msu.edu](http://broadmuseum.msu.edu)

FB TW IG @msubroad

**MSU BROAD**



# ATTENTION MSU RETIREES:

MSU Benefits Open Enrollment is **October 1–31, 2019**

*Save time and enroll online at [ebs.msu.edu](http://ebs.msu.edu) in October.*

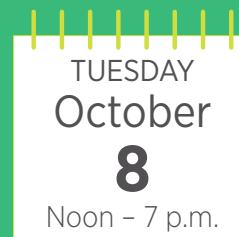


More info will be sent out in September

## MSU Benefits Fair

Visit the MSU Benefits Fair at the Breslin Center to ask MSU benefits vendors and MSU Human Resources staff questions about your benefits.

### BENEFITS FAIR DATES AND TIMES:



Human Resources  
MICHIGAN STATE UNIVERSITY

[hr.msu.edu/open-enrollment](http://hr.msu.edu/open-enrollment)



Income  
for You  
Now.

## Support for **MSU** Students and *Programs* Later.

### **DO YOU HAVE A LOW-YIELD ASSET SUCH AS CDs?**

*Would you like to increase your income from those assets?*



Establish a charitable gift annuity (CGA) to turn it into a gift that provides you support **now** and support for MSU students and programs **later**.

#### **CGA BENEFITS TO YOU INCLUDE:**

- Fixed and guaranteed income payments for life
- Charitable tax deduction
- Future support for MSU designated per your wishes

#### **REQUIREMENTS TO ESTABLISH A CGA INCLUDE:**

- \$10,000 minimum to establish a CGA for MSU
- You must be at least 60 years old to receive payments

Contact the Office of Gift Planning for an illustration of how a charitable gift annuity can help you now and provide support for MSU later.

**Office of Gift Planning**  
University Development  
Michigan State University  
Spartan Way  
535 Chestnut Rd., Room 300  
East Lansing, MI 48824  
(517) 884-1000

[giftplanning.msu.edu](http://giftplanning.msu.edu)

**SPARTANS WILL.**

# Connect with MSURA by helping fund scholarship, receiving eNotices

## MSURA SCHOLARSHIP INFORMATION

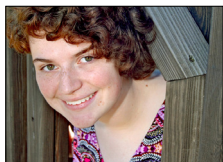
The MSU Retirees Association provides annual scholarships to MSU students who are children and grandchildren of MSU retirees and employees. We have endowed two \$2,500 scholarships to date and we are working to endow a third scholarship. If you would like to donate to this scholarship fund, you may do so. We thank you for helping to make this scholarship a success.

**BY MAIL:** If you wish to donate to the MSURA Scholarship Fund by mail, make your check payable to **Michigan State University** with MSURA Endowed Student Scholarship written in the memo line. Mail to University Advancement, 535 Chestnut Road, Room 300, MSU, East Lansing, MI 48824

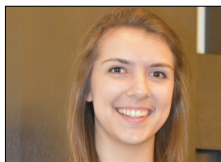
**ONLINE:** You may also go online to MSU to donate.

- Go to <http://givingto.msu.edu/gift/>.
- Type in "MSURA Endowed Scholarship Fund" for Areas to Support.
- Click on "Add to Cart." Enter your gift amount.
- Click on "Proceed to Checkout." Complete donation.

## SCHOLARSHIP WINNERS TO DATE



Claire Weessies



Amanda Pohl



Callahan Riggs



Kathleen Wahl

## NEWSLETTER FORM

If you wish to **receive a paper copy of the Spartan Senior newsletter delivered via U. S. Mail**, please fill in the form below and return it to

MSU Retirees Association, Suite 22 Nisbet Bldg., 1407 S. Harrison Road, East Lansing, MI 48823-5239

Name \_\_\_\_\_

Street address or P. O. box \_\_\_\_\_

City \_\_\_\_\_

State \_\_\_\_\_

ZIP code \_\_\_\_\_

## DONATION FORM

To make a donation to MSU by mail, to benefit the MSU Retirees Association, **make your check payable to MSU—Retirees Association, AB272**, enclose your name and full address, and mail to University Advancement, 535 Chestnut Road, Room 300, Michigan State University, East Lansing, MI 48824

Name \_\_\_\_\_

Street address or P. O. box \_\_\_\_\_

City \_\_\_\_\_

State \_\_\_\_\_

ZIP code \_\_\_\_\_

## eNOTICES

Want to get our eNotices? MSURA's e-Notices are published twice each month. To SUBSCRIBE, UNSUBSCRIBE, or CHANGE an email address for delivery of eNotices to the e-Notices Editor, please email: [MSURA.List.Manager@gmail.com](mailto:MSURA.List.Manager@gmail.com).



**Sept/Oct Highlights**  
SEE MORE AT  
[MUSIC.MSU.EDU](http://MUSIC.MSU.EDU)

**9/26 THURSDAY**  
**Wind Symphony**  
7:30 p.m. Wharton Center

**9/27 FRIDAY**  
**Symphony Orchestra**  
7:30 p.m. Wharton Center

**9/30 MONDAY**  
**Ensemble Bizarria**  
TAYLOR JOHNSTON EARLY MUSIC SERIES – FIFTH ANNUAL –  
**7:30 p.m. Fairchild Theatre**  
*Orpheus and Hercules: Music from the Court of Modena.* Two of the best West Coast performers of early music bring to life the virtuosic music of the Este court of Modena, featuring rare gems for violin and cello by 17th-century composers.

**10/7 MONDAY**  
**Celebrating the Music of Johann Sebastian Bach**  
JOANNE AND BILL CHURCH WEST CIRCLE SERIES – 10TH ANNIVERSARY –  
**7:30 p.m. Fairchild Theatre**  
One of Western music's most important composers, his music has been enjoyed by audiences and celebrated by musicians for hundreds of years.

**10/11 FRIDAY**  
**Jazz Orchestras and jazz trumpeter Tanya Darby**  
MSUFCU JAZZ ARTIST IN RESIDENCE  
**8:00 p.m. Fairchild Theatre**  
The California native has been a member of several jazz orchestras and big bands, toured with artists like Dianne Reeves, Clark Terry, and Gladys Knight, and performed with Aretha Franklin in a special on NBC.

**10/20 SUNDAY**  
**Spartan Spectacular**  
3:00 p.m. Wharton Center  
Green and White musical experience features the Spartan Marching Band and MSU ensembles.

**10/24 THURSDAY**  
**Wind Symphony**  
7:30 p.m. Wharton Center

**10/25 FRIDAY**  
**Symphony Orchestra**  
8:00 p.m. Wharton Center



**Suite 22 Nisbet Bldg. MSU  
1407 S. Harrison Road  
East Lansing, MI 48823-5239**



**HAPPY FALL!**

### Lessons on Investing – Did you know?

StraightLine is a fiduciary that was chosen by MSU to provide professional advice and management to both employees and retirees at MSU. Our experienced advisors and dedicated research staff allows us to offer unbiased information to the MSU faithful. We present the following for your review:

#### Straight to the Point

**Market Update** - After a bit of a hiccup, trade talks with China are once again taking place. This, coupled with global central banks taking a decidedly dovish turn, has investors feeling good about the prospects for markets. Domestic stocks in particular have built on their strong start to the year, with further gains in June and July. International markets have also done well, with double digit gains, but they lag their US counterparts. Meanwhile bonds continue to produce solid returns as the prospect for rate cuts and quantitative easing in some areas comes closer into view.

**Investment Implications** - It's difficult to predict short-term market movements, but we see little to be overly concerned with at this time. Much of the market swings will continue to hinge on US/China trade talks and the moves of the Fed and other central banks. Stocks and bonds have both done very well this year, something that doesn't usually happen at the same time. At some point there is a risk that either side may see a deeper correction. For now we'd stay invested and appropriately diversified and, although things look decent, be wary of taking on too much risk in any one area.

Our quarterly newsletter (StraightTalk) walks through the macro information that we are utilizing in respect to our near term strategy. Please contact us if you are interested in receiving these newsletters or discussing our macroeconomic views.

**From StraightLine Higher Education Services**



**Headquarters**  
165 Kirts Blvd, Suite 100  
Troy, MI 48084

**East Lansing Office**  
2911 Eyde Pkwy, Suite 100  
East Lansing, MI 48823

**(877) EDU-403B**  
info@straightline.com  
www.straightline.com



**SPARTAN SENIOR NEWSLETTER** MSU Retirees Association, Suite 22 Nisbet Building, MSU, 1407 Harrison Road, East Lansing, MI 48823-5239 • **Phone** (517) 353-7896 • **Email** [msura@msu.edu](mailto:msura@msu.edu) • **Editor** Rick Vogt (517) 242-1324 • **Website** <http://retirees.msu.edu> • **Facebook** <https://www.facebook.com/MSURetirees> • **Change of address or MSU benefit questions**, contact MSU Human Resources at (800) 353-4434